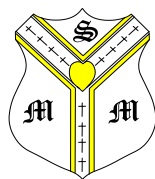


Saint Margaret Mary's Catholic Infant School Newsletter



Friday 6th February 2026



School Attendance Matters

Class 1	93.7%	Class 7	88.8%
Class 2	87.7%	Class 8	97.3%
Class 3	96.7%	Class 9	90.8%
Class 4	94.8%	Class 10	94.6%
Class 5	92.8%	Class 11	96%
Class 6	90.4%	Class 12	96.4%

School Attendance Matters This week's Attendance



Our target for attendance this year is 96%

Our overall attendance this week was 93.3%, which is slightly better than last week but below our target. Please try your best to send you child into school each day, on time.

Let's really work hard to improve this next week!!

Attendance Award in Reception goes to Class 12.

Attendance Award in Year 1 goes to Class 8.

Attendance Award in Year 2 goes to Class 3.

The children in these classes will enjoy a treat of their choice after discussions with their class teacher.

HOLIDAY DATES FOR 2026-2027 (Shared at the back of this newsletter)

Autumn Term

Inset days— Tuesday 1st September 2026
Monday 19th October 2026
Tuesday 20th October 2026

Term Starts—Wednesday 2nd September 2026

Half Term— School closes Friday 16th October 2026 and re-opens on Monday 2nd November 2026

Autumn Term Ends - Friday 18th December 2026

Spring Term

Term Starts—Monday 4th January 2027

Half Term—School closes Friday 12th February 2027 and re-opens on Monday 22nd February 2027

Spring Term Ends—Thursday 25th March 2027

Summer Term

Inset days—Friday 4th June 2027
Friday 23rd July 2027

Bank Holiday - Monday 3rd May 2027

Term Starts—Monday 5th April 2027

Half Term—School closes Friday 21st May 2027 and re-opens on Monday 7th June 2027

Summer Term Ends—Thursday 22nd July 2027

MATHS FAMILY LEARNING WORKSHOPS

Our family learning workshops will begin again this half term with a focus on Maths.

Our specialist teacher will work with parents and their children on a variety of activities linked to maths.

Spaces for this are limited to 15 per session.

Dates for Reception and Year One are below:

*Tuesday 10th February 2.00pm till 3.00pm Classes 5 and 6

If you are interested in a place on this please book through the school office.

Places are limited and will be offered on a first come, first served basis.

Parents will be informed by our office if they have been successful getting a place.

Parent Pay

Parents are reminded that we are a cashless school and use ParentPay as our paying and booking in system for school trips, events and school dinners.

Parents will receive a letter with a link and password to register for this from us, if they are new to the school.

If you need more information on this please visit the school office and we will be happy to help.

Nursery extended hours

We offer extended hours to our Nursery provision from 2.30pm till 3.15pm every day for those who wish to use it. This is costed at £4.50 each day. If you wish to know more about this please ask at the school office.

Breakfast and After School Club

Just a reminder that we offer Breakfast and After School Club for all our children. This is run by our own staff in school.

Breakfast Club is charged at £3.25 per session.

After School Club is charged at £8.50 per session.

If you would like more information please speak to the school office, Mrs Harris or Miss Mahoney.

HEALTHY LUNCH BOX IDEAS

Please find below some healthy ideas for school packed lunches from Knowsley Healthy Eating.



Idea 1	Idea 2	Idea 3
Cheese and crackers Satsuma Cucumber Boiled egg Fruity flapjack Water	Egg and salad sandwich Rice crackers Sliced cucumber Sliced kiwi fruit Cheese	Cheese and salad roll Clementine Malt loaf Carrot sticks Houmous

Just a reminder that we do have some children in school who have intolerances and nut allergies. Please ensure that your child's packed lunch do not contain nuts or products that may contain nuts, this includes NUTELLA chocolate spread.

In the event that a member of staff notices a pupil eating an item that may contain nuts, the item will be removed politely, the adult will explain why this has been done and the item will be disposed of. This is to protect any child who may have a nut allergy. An alternative or additional food will be offered for that child, if available.

LUNCH, EXTENDED PROVISION AND WRAP AROUND PAYMENTS

Please remember that places for wraparound breakfast club, afterschool club and nursery optional extended hours provision must be booked in advance via Parent Pay by midnight on the Thursday of the week before you require a place.

Unfortunately, the School office is unable to book any wraparound care after this time, as the staff to child ratio would have already been allocated.

Your efforts with this would be greatly appreciated.

PARENT EVENTS FOR THE NEXT HALF TERM

When we return in the New Year we have the following events planned for the first few weeks, which parents/family members are welcome to attend.

*Tuesday 10th February—Classes 7 and 8 Prayer and Liturgy (9.15am in School Canteen)

*Tuesday 10th February—Maths Parent workshop with children (Classes 5 and 6) 15 places maximum 2.00pm

*Wednesday 11th February— POPP session for parents 9.00am (held in juniors) any welcome

*Parent Session for On line Safety with Allan Ellis—Wednesday 11th February at 2.00pm in our School Hall.

*Thursday 12th February—9.00am and 2.30pm Year 2 CHET Parents meeting in School Canteen

YEAR 2 THEATRE WORKSHOP

We are excited to announce that each class in Year Two will have their own theatre workshop experience.

Teeny Tiny Theatre will be coming to school on Wednesday 11th February to work with each class to use drama to recreate the events of the Great Fire of London. This is directly linked to the work the children have been doing in History around The Great Fire of London.

The children will learn about the events that took part, work in small groups with props and build up to re-create those events with a performance at the end of the session.

As this is an external company delivering the sessions, we are asking for a contribution of £2.00 per child.

This can be made via ParentPay.

Thank you for your continued support.

The Year 2 Team

COUNCILLOR DEVER DETAILS

Our local Councillors in Swanside send out via email a community newsletter which includes information about our community to support residents.

Articles include job opportunities, road closures, community groups, local history, events, etc.

If you would like to receive the newsletter please email colin.dever@Knowsley.gov.uk

Read Write Inc.

Take a look at the video in the link to learn more about:
What is Read Write Inc. Phonics?



CERTIFICATE AWARD WINNERS THIS WEEK

The following children have been awarded certificates this week in our Awards Assembly today. Names will appear each week on our newsletter as a congratulations and well done.

LOVING CERTIFICATES	
Class 1– Joshua Griffiths	Class 2– Miley-Eden Chadwick
Class 3 - Jessica Smith	Class 4 - Evelyn-Grace Connolly
Class 5– George Loftus Burke	Class 6—Thomas Farrell
Class 7—Dominic Hyland	Class 8 - Elena Leyland
Class 9 - Alba Cross	Class 10 - Jacob Jones
Class 11—Sophia Birkenhead	Class 12 - Harry Fitzpatrick
Nursery 1—Haizel Thomas	Nursery 2— James Nolan

LEARNING CERTIFICATES	
Class 1– Joseph Kennedy	Class 2– Blaine Knight
Class 3 - Joshua Pimblett Wills	Class 4 - Samuel Ola
Class 5– Chloe Hartston	Class 6—Dantez Danish
Class 7—Lexi Korbel	Class 8 - Felix Harding
Class 9 - Roman Alzahabi	Class 10 - Joseph Cameron Byrne
Class 11—Lila Rose	Class 12 - Isabelle Barnett
Nursery 1—Isabel Anish	Nursery 2— Gabreil Paulose

GROWING CERTIFICATES	
Class 1– Sophia Hughes	Class 2– Mia Florence Regan
Class 3 - George Siddell	Class 4 - Riley Hughes
Class 5– Cora Ingham	Class 6—Laila Zabar
Class 7—Arielle OKenna	Class 8 - Zaria Elliot
Class 9 - Cairo Elliot	Class 10 - Aiden Jijo
Class 11—Jack Ridd	Class 12 - Nancy Johnston
Nursery 1—Ayla Sanderson	Nursery 2— Louie Martland

MISSION STATEMENT AWARD	
Nursery—Bodhi Karmellhi	Reception—Layton O’Brien
Year One—Gabriella Murphy	Year Two—Lauren Jinu

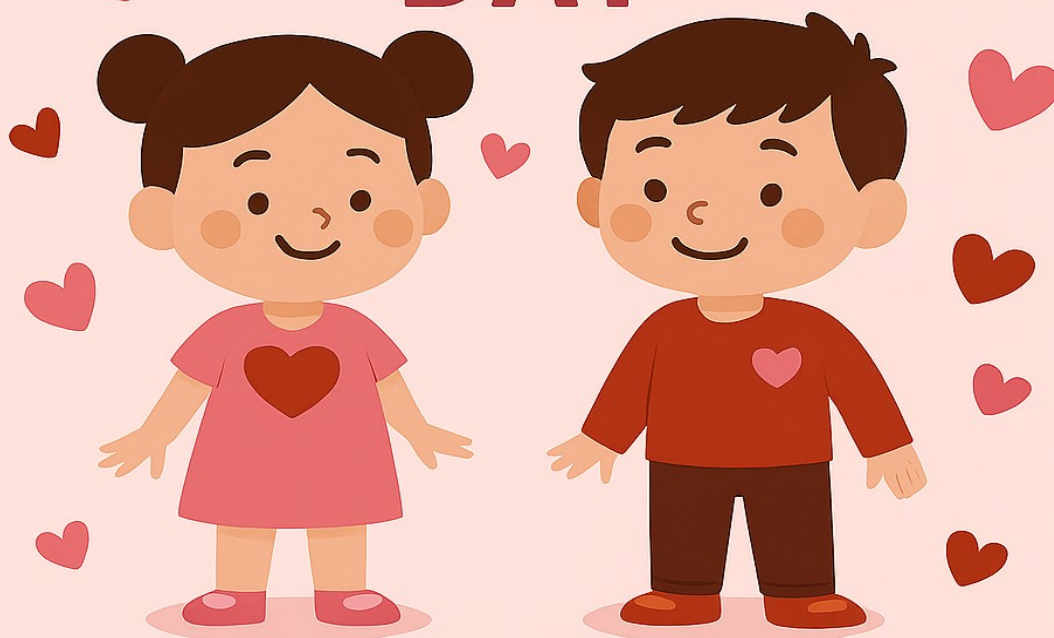
WRITING STARS OF THE WEEK

WRITING STAR WINNERS	
Class 1– Harry Bates	Class 2– Luna Martland
Class 3 - Sonny Townson	Class 4 - George Hornby
Class 5– Nancy Gallaher	Class 6—Luca Jones
Class 7—Lewis Moorcroft	Class 8 - Charlie Ellis Kennedy
Class 9 - Ruby Duncan	Class 10 - Riva Forster
Class 11—	Class 12 - Adam Lee Russell
Nursery 1—Skylar Clark	Nursery 2— Aiden Lewis Gray



ST MARGARET MARY'S PTA

**VALENTINE'S
OWN CLOTHES
DAY**



Wear something PINK or RED

**FRIDAY
13th FEBRUARY**

Cost £1.00 payable via ParentPay

ONLINE SAFETY AND COMPUTING WORKSHOP



Wednesday 11th February
2.00 pm to 3.00 pm

School Hall

**LIMITED
PLACES
AVAILABLE!**

Please return your reply slip to the
office if you wish to attend.

DATES FOR YOUR DIARY – THESE ARE SUBJECT TO CHANGE

Tuesday 10th February 2026	*9.15am Prayer and Liturgy—Classes 7 and 8 (School canteen—all parents welcome) *2.00pm Maths Workshop (CL 5 +6) *3.15pm School Council and Eco Council
Wednesday 11th February 2026	*Great Fire of London—Year 2 workshop *9.00am POPP session (in Juniors) *2.00pm Online Safety Parent Session
Thursday 12th February 2026	*9.00am and 2.30pm CHET Parent meetings - Year 2 (please attend one)
Friday 13th February 2026	*Break up for half term. *Dress up in Red or Pink (£1.00)
Monday 23rd February 2026	INSET DAY -School Closed
Tuesday 24th February 2026	*Back to school—8.40am doors open *3.30pm History Club
Wednesday 25th February 2026	*9.00am Class 1 Stay and Read
Thursday 26th February 2026	*9.00am Class 2 Stay and Read
Tuesday 3rd March 2026	*9.15am Prayer and Liturgy—Classes 9 and 10 (School canteen—all parents welcome) *3.30pm History Club
Wednesday 4th March 2026	*9.00am Class 3 Stay and Read *Story Explorers workshop for Nursery
Thursday 5th March 2026	*9.00am Class 4 Stay and Read *2.00pm Parent SEND Coffee Afternoon session
Tuesday 10th March 2026	*9.15am Prayer and Liturgy—Classes 11 and 12 (School canteen—all parents welcome) *3.15pm School Council *3.30pm History Club
Wednesday 11th March 2026	*9.00am Class 5 Stay and Read


ST MARGARET MARY'S CHURCH

SUNDAY MASS TIMES- Saturday evening at 5.30p.m. and Sundays (including Children's Church) at 10.00a.m.
 Exposition of the Blessed Sacrament: Saturday at 5pm.

[St Margaret Mary's Catholic Infant School - Parish](#)



Raise funds for us for FREE

with  easyfundraising



Join as our supporter today at:

www.easyfundraising.org.uk/support-a-good-cause

Just search for:

St Margaret Mary's Catholic Infant School

8,000+ retailers will donate to us whenever you shop with them



JOHN
LEWIS



Over
£60m
raised for UK good causes

£0
extra cost to anyone

In just three easy steps you will be helping us create a vibrant, fun, and inclusive environment where students can grow and enjoy new experiences.

<https://www.easyfundraising.org.uk/causes/st-margaret-marys-catholic-infant-school/>

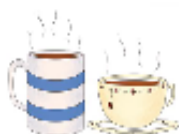
Raise free donations for St Margaret Mary's Catholic Infant School when shopping online with easy fundraising. It won't cost you a penny extra. All you need to do is:

1. Go to <https://www.easyfundraising.org.uk/causes/st-margaret-marys-catholic-infant-school/> and join for free.
2. Install the app and Donation Reminder extension.
3. Activate your donation before shopping online and the retailer will automatically donate to us for free! Thank you for your support.

Power Of Parenting

pop in to our Power of Parenting group

Fancy a
cuppa?



**Have a cuppa and a chat with other parents
in an informal and relaxed atmosphere**

Group run by Learning Mentors Jackie Harris & Carmel Perry

Session 1	Wednesday	28th January 2026	9 — 10.30am
Session 2	Wednesday	4th February 2026	9 — 10.30am
Session 3	Wednesday	11th February 2026	9 — 10.30am
Session 4	Wednesday	25th February 2026	9—10am

Venue: St Margaret Marys JUNIOR School

Being a parent is one of the toughest jobs in the world.
Parents are teachers, carers, guides, leaders, protectors, providers
and motivators for their children.

The POPP programme aims to build on parenting skills, increase
confidence and further develop strategies to guide, nurture and
encourage positive behaviours in children.

**On Wednesday 25th February (4th session) your child will accompany
you in taking part in some fun practical activities that will help to
support them to reduce stress, anxiety and feel a sense of calm.**

If you are interested in attending the **Power Of Parenting Programme**
please complete below or contact Mrs Harris or your child's class
teacher no later than - **26th January 2026.**

***Places are limited and will be offered on a
'first come first served' basis***

Power Of Parenting Programme

Parent's name _____

Contact number _____

Childs name _____ Class _____



St Margaret Mary's
Catholic Infant School

St Margaret Mary's Catholic Infant School

Holiday Dates 2026 - 2027

Autumn Term	
Inset days	<ul style="list-style-type: none">• Tuesday 1st September 2026• Monday 19th October 2026• Tuesday 20th October 2026
Term Starts	Wednesday 2 nd September 2026
Half Term	School closes Friday 16 th October 2026 and re-opens on Monday 2 nd November 2026
Autumn Term Ends	Friday 18 th December 2026

Spring Term	
Inset days	
Term Starts	Monday 4 th January 2027
Half Term	School closes Friday 12 th February 2027 and re-opens on Monday 22 nd February 2027
Spring Term Ends	Thursday 25 th March 2027

Summer Term	
Inset days	Friday 4 th June 2027 Friday 23 rd July 2027
Bank Holiday	Monday 3 rd May 2027
Term Starts	Monday 5 th April 2027
Half Term	School closes Friday 21 st May 2027 and re-opens on Monday 7 th June 2027
Summer Term Ends	Thursday 22 nd July 2027

Guest Speakers









St Margaret Mary's
Catholic Infant School

If you are a parent/carer/grandparent/aunt/uncle of a child with Special Educational Needs, or you have concerns. Even if the child is not old enough to attend our school or if they have moved on to the Juniors, you are welcome to attend one or all of our guest speaker events. We will meet to have refreshments and listen to a guest speaker.

The aim is to give you more knowledge of what is available to help your child at home and in school.

Please note some are **morning sessions** and others are **afternoons**. You are welcome to attend only the ones that interest you or you can attend them all. You can also bring a friend.

The guest speaker events will take place in the canteen at St Margaret Mary's Catholic Infant School.

Date	Time	Guest Speaker
Thursday 12 th March 2026	MORNING 8:50 – 9:50am 	LIVPAC 'Liverpool Parent and Carers Forum (LivPaC) is a group of parents and carers of children and young people with special additional needs and/or disabilities (SEND) who work with education, health and care services to ensure the services they plan and deliver are fit for purpose and meet the needs of children, young people and their families across Liverpool.'
Thursday 26 th March 2026	MORNING 8:50 – 9:50am 	KPCV Knowsley Parent Carer Voice 'We are a group of parent carers of children and young people with special educational needs and disabilities from Knowsley. Our aim is to work in partnership with Education, Health, Social Care & Well-being services to influence and develop quality services for children and young people with Special Educational Needs and Disabilities in Knowsley.'
Thursday 16 th April 2026	MORNING 8:50 -9:50am 	Early years SEND advisor will come to school to talk about: * Delayed development * Their offer. * General SEND discussion and Q&A.
Thursday 23 rd April 2026	AFTERNOON 2 – 3pm 	ADDvanced Solutions 'We're here to support you and your family to find the answers ADDvanced Solutions Community Network is an open access offer that supports the emotional health and wellbeing of neurodivergent children and young people, their families and the professionals that work with them.'
Thursday 30 th April 2026	AFTERNOON 2 – 3pm 	Parenting Knowsley Give advice on how their service can help parents/carers.
Thursday 7 th May 2026	TBC	
Thursday 14 th May 2026	AFTERNOON 2-3pm 	Knowsley Autism Team 'The team will work with the borough's schools and pupils to provide information, advice and supporting, ensuring that their needs are being met. By supporting the graduated approach and delivering timely, targeted advice, the Autism Advisory Team will help schools identify and meet needs earlier. Strengthening staff confidence and capacity in mainstream settings reduces reliance on reactive support, aims to lower Education Health Care Plan (EHCP) applications, and ease pressure on specialist provision.'

PARISH of SAINT MARGARET MARY

The Presbytery

Pilch Lane

Liverpool

L14 0JG

E: stmargaretmarys@rcaol.org.uk

W: www.stmargaretmarys.org.uk

PART OF THE ARCHDIOCESE OF
LIVERPOOL (REG. CHARITY 1199714)

Parish Priest: Father Roy Cooper

Administrator: Denise Hague

Safeguarding: Rose Moffat, Terri Wilson

Presbytery: 0151 394 0507

Parish Centre: 0151 220 6616

Convent: 0151 228 3970

Infants School: 0151 477 8815

Juniors School: 0151 477 8490



LITURGICAL CALENDAR		2026	Sanctuary Lamp burns for: Audrey Coleman	
Fifth Sunday in Ordinary Time (A)			Our Lady's Lamp burns for: Vera Hesketh	
DAY		TIME	SERVICE	INTENTION
Saturday	7th February	16:30	Adoration, confession	
		17:30	Sunday Vigil Mass	Parishioners
Sunday	8th February	10:00	Mass	Bryan Collings
Tuesday	10thFebruary	18:40	Rosary 6.15 followed by Evening Prayer	
		19:00	Mass	Grace Ciara Duncan
Wednesday	11th February	10:00	Funeral Mass Vincent Muldoon	
Thursday	12th February	10:00	Mass	Mark Hughes
Friday	13th February	10:00	Mass	Mary Anderson
Saturday	14th February	16.30	Adoration, confession	
		17:30	Sunday Vigil Mass	Parishioners
Sunday	15th February	10:00	Mass	James Finnegan
PARISH CENTRE CALENDAR				
DAY	TIME	EVENT	DETAILS	
Thursday	12:00	Over 55's Lunch Club	Two courses for £7 cooked by Lynne & Peter Fiddler. To book your place phone 0151 481 0032	
Thursday	14:15 - 16:00	Knit and Natter Group	Closed for winter break	
Thursday	19:30	UCM Meeting		
Thursday	21:30	Quiz		
Sunday	11:00	Coffee Morning	Sunday after 10:00 Mass. Everyone is welcome.	
Opening Hours: Thursday – Sunday from 7pm & Sunday afternoons from 12 noon. Mondays – Wednesdays: functions – bar closes at 8pm. For functions, contact Karen, the manager, Tel 0151 220 6616. Warm and cosy centre: Our parish centre is open on Thursdays to all between 1:30-2:30pm, with Free tea, coffee and biscuits, access to TV and WIFI and friendly company.				

Please pray for the sick: Lee Mulvihill, Peter Bryan, Mary Jo Davis. Liz North, Frances Woods. John Murphy, Gerry Lowe, Peter Beswick. John May, Kevin Wheatley. Rachel Pickup. Joan Stanton. Malcolm Turner,

Mass Association: James Sutton, Jim Henderson, Doris Dickinson, Darren Booth, Brian Atkins.

Please pray for the recently deceased: Vincent Muldoon.

Office Hours – The Parish Office is usually open on: Tuesday's Wednesday's Thursday's & Fridays between 9.30am – 1.30pm